

# Tara

**[www.taragroup.com.au](http://www.taragroup.com.au)**

Tara Group Aust Pty Ltd - PO Box 3698 Victoria Point West QLD 4165 - Office 07 5527 4101

# OUR PHILOSOPHY

Tara Group is built on a simple principle, one which is captured by the traditional Irish proverb “Trí na chéile a thógt na chaisléain”, which translates as “Only by working together, we can build castles”. This focus on relationship-building, networking and co-operation is responsible for the successful development of the business.

The business rates itself on customer satisfaction and measures its growth in terms of relationship development.

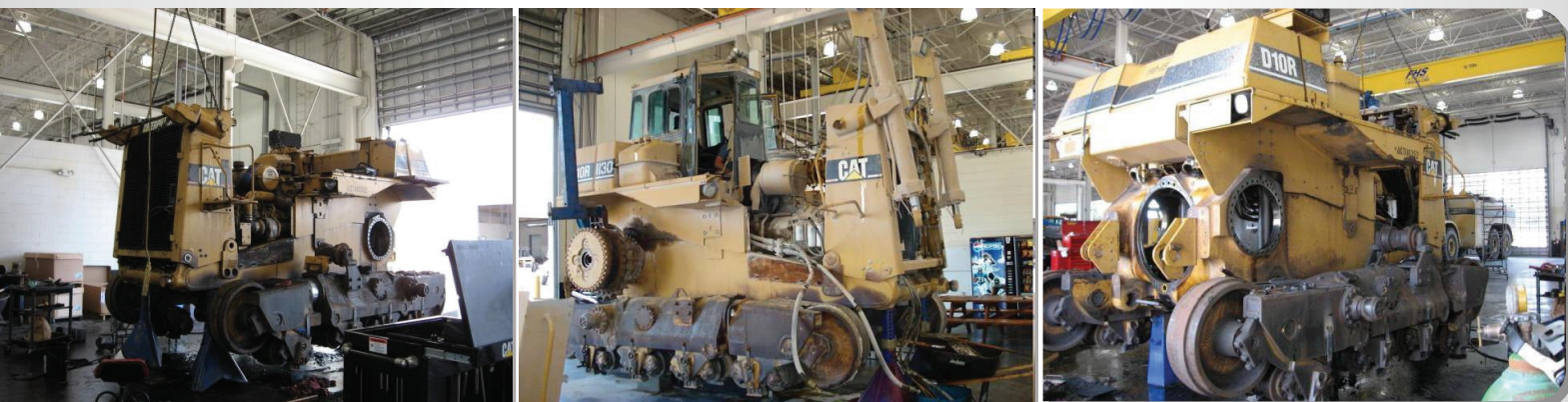
## EQUIPMENT SOLUTIONS

- New Equipment
- Used Equipment
- Equipment Rental
- Client Advice and Support
- Partnership



# TARA GROUP FLEET

The Tara Group fleet include a wide range of Dump Trucks, Loaders, Excavators, Wheel Loaders and other equipment.





# TARA GROUP CORE FOCUS

Mining and resources

Civil infrastructure and tunnelling

Power transmission

Petroleum, oil and gas

## Stockpile Management

Loading  
Train Loading  
Stockpile Dozing  
Rejects Management

## Workshop

Maintenance Services  
Equipment Rebuilds  
Fabrication

## Ancillary

Crushing/ Screening  
Road Maintenance  
Wash Plant Services  
Drill Pad Preparation  
Wet & Dry Hire

## Bulk Haulage

Contract Off Road  
Side Tippers  
Articulated Trucks



## MINING AND INDUSTRIAL SERVICES

Tara will bring together a highly skilled team, modern and reliable equipment and a culture that will proactively drive this project. Tara is the contractor of choice for many clients to provide lift and shift solutions.

Whether it is installation of heavy equipment components, the transportation and men for plant shutdowns and maintenance, a project specific equipment fleet, we have a diverse range of specialist equipment to suit almost any application. As Tara continues to increase the size of our Company through organic growth, it is a logical progression to move towards providing contract mining services to select customers which will allow for horizontal integration of other Tara services.

## FOCUSED ON SAFETY

- Number one priority for Tara and its customers – “licence to operate”
- Market leading systems and support e.g. 24-hour GPS tracking technology and tyre technology improvements
- High focus culture, with positive working attitudes and behaviour
- Extensive internal and external safety audit program and continuous improvement focus
- Implementation of various health programmes and initiatives
- Ongoing skills development and competency testing for of people.

# THE TARA ADVANTAGE

## Hiring your heavy earthmoving equipment with Tara Group Guarantees

- ✓ **Efficiency** - Rental improves your capital efficiency
- ✓ **Customability** - dry hire with a range of tyre and maintenance options
- ✓ **Agility** - Access TARA's fleet of quality machinery from a range of brands
- ✓ **Flexibility** - rental schedules can be long or short term
- ✓ **Integration** - Retention of your company's OH&S systems and processes
- ✓ **Leverage** - Utilisation of your own experienced equipment operators

*We are always there to offer ongoing project management support.*

Tara Group work closely in partnership with all of our customers to provide custom built solutions based on our customers needs.

We understand that each of our customers, and each of their projects is unique, and so we believe in liaising closely with our customers to develop each contract. For each new contract, we meet with and consult our customer to carefully discuss requirements, budget and location. Together, we can then offer the best solutions.

**Tara** is an Agent of **vacuworx**



**VACUWORX**

As the globally recognized leader in heavy-duty lifting technology – Vacuworx provides the most comprehensive and complete line of lifting and material handling systems on the market.





# MISSION STATEMENT

*Tara Group succeeds by working in partnership with our valued clients to customise earthmoving equipment solutions including equipment rental.*

- ✓ Fleet of heavy earthmoving equipment models from a range of OEM suppliers.
- ✓ Flexibility and commitment to deliver customised, tailored service to meet our clients needs.
- ✓ Dry hire rental, maintenance options, variable terms, procurement services, and parts supply offered.
- ✓ Extensive project consultancy experience - built with bluechip miners and contractors to smaller operators in construction and agricultural industries.
- ✓ Recognition of people and relationships as fundamental to business success.



## **Some of the options we can discuss with you include:**

- ✓ Flexible rental term to reflect your operation
- ✓ Machines selected from our comprehensive fleet of quality machines from a range of brands
- ✓ Maintenance through the project life (which we can provide, as required)
- ✓ Delivery of equipment to any location